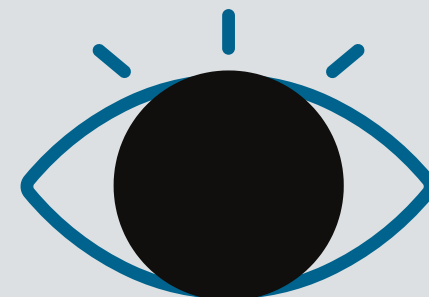


Aniridia in WAGR Spectrum

Nearly every person with WAGR spectrum has Aniridia. Aniridia is the partial or near-complete absence of the iris, the colored part of the eye



The effects of aniridia vary from one individual to another
Regular checkups should begin at birth or diagnosis

Aniridia is associated with

Conditions of the eye

- glaucoma
- cataracts
- keratopathy
- nystagmus
- photophobia
- ptosis
- strabismus

Medical conditions in other parts of the body

- the brain
- pancreas
- hearing
- sense of smell

wagr.org

- *People with WAGR have a high risk of developing glaucoma*
- *Cataracts may be present at birth but do not require surgical removal unless they interfere with usable vision*
- *Contact lenses are not recommended*

Resources for Families, Physicians, and Researchers

These organizations work together to learn more about aniridia and its causes and complications, and to develop possible treatments



wagr.org/aniridia

Promote awareness, stimulate research, and support families affected by WAGR syndrome



aniridiana.org

Represent, serve, and support the North American community of persons affected by aniridia and their families, patient advocacy organizations, and clinicians and scientists



aniridia.eu

Support people with aniridia in all countries and help them to share information and build useful networks in their own countries and abroad

Krause MA, Trout KL, Lauderdale JD, Netland PA. Visual Acuity in Aniridia and WAGR Syndrome. Clin Ophthalmol. 2023 May 1;17:1255-1261. doi: 10.2147/OPHTH.S405003. PMID: 37152637; PMCID:PMC10162095

<https://pmc.ncbi.nlm.nih.gov/articles/PMC10162095/>